



Forest Resources HCP Fact Sheet

WWW.CUMBERLANDHCP.ORG

HCP DEVELOPMENT IS FUNDED BY A USFWS PLANNING ASSISTANCE GRANT. IN-KIND SERVICES ARE PROVIDED BY THE TENNESSEE WILDLIFE RESOURCES AGENCY. PROJECT SUPPORT IS PROVIDED BY STAFF FROM THE NATURE CONSERVANCY, TENNESSEE TECH UNIVERSITY, AND THE UNIVERSITY OF TENNESSEE.

FOR MORE INFORMATION SEE WWW.CUMBERLANDHCP.ORG OR CALL (865) 974-1955.

2010

Tennessee Wildlife Management Areas (WMAs) provide habitat for game and nongame species, including those which are rare, threatened, or endangered. Given the increasingly used and impacted Cumberland forests, the Tennessee Wildlife Resources Agency (TWRA) is currently developing a Forest Resources Habitat Conservation Plan

(HCP) to balance the sometimes-conflicting needs of game species and imperiled biodiversity. In the HCP, TWRA will implement scientifically based forest and timber harvest management practices that will protect the long-term viability of rare species. In so doing, TWRA will mitigate negative impacts to these species and promote its broader wildlife management goals.

Covered Species

There are 46 covered species in the HCP whose habitat needs drove the selection of conservation measures. Selection of covered species was based on rarity status, location of documented occurrences, and possibility of impact from TWRA activities. Species diversity is

extensive, from birds to bats, small mammals, reptiles, amphibians, fish, crayfish, mussels, and others. Covered species include three species listed as "endangered" on the Endangered Species Act: Indiana bat, purple bean mussel, and Cumberland elktoe mussel.

Biological Goals & Objectives

The Biological Goals & Objectives (BGO) outline ecological functions the HCP is designed to sustain. The BGOs are organized by habitat communities, such as "forests and woodlands" and "isolated wetlands." BGOs include maintaining sufficient

healthy mature forest stands; limiting disturbance in ecologically critical areas; maintaining a variety of successional stages; enhancing water quality; and enhancement of other ecological functions critical to long-term viability of the covered species.

Conservation Measures

HCP conservation measures are specific to each BGO. The following are examples of conservation measures included in the HCP: retain diversity in forest structure; use a combination of prescribed fire and mowing to achieve 3,700

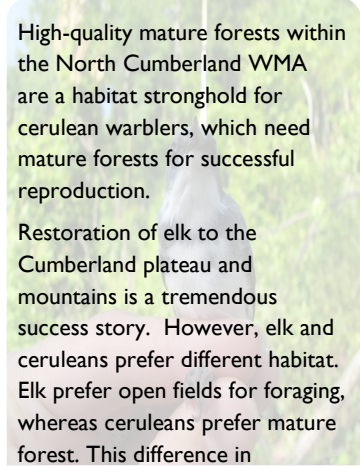
acres of oak savanna; maintain 100-200' no-harvest buffers, depending on the landscape feature; retain snags; close selected highly erodible roads; monitor Best Management Practices during timber harvest activities; follow specific timber harvest practices for cerulean

Monitoring & Adaptive Management

A key component of the HCP is demonstrating the plan's effectiveness at sustaining populations of the covered species over time. This is accomplished through monitoring.

The HCP monitoring strategy tracks habitat integrity, sediment load in streams, and species populations. These factors will be compared across recently harvested stands, stands harvested > 5 years prior,

CERULEAN WARBLERS AND ELK



High-quality mature forests within the North Cumberland WMA are a habitat stronghold for cerulean warblers, which need mature forests for successful reproduction.

Restoration of elk to the Cumberland plateau and mountains is a tremendous success story. However, elk and ceruleans prefer different habitat. Elk prefer open fields for foraging, whereas ceruleans prefer mature forest. This difference in preferred habitat presented a management challenge for the HCP. Current efforts to resolve these competing demands include identification of cerulean reserves in areas of highest quality cerulean habitat. TWRA is also identifying elk habitat restoration opportunities within and outside the HCP project area to meet their goal of 10,000 acres of elk habitat. Upon completion of the cerulean reserves, TWRA will re-evaluate joint habitat restoration opportunities. With 146,000 acres in the planning area, meeting the habitat requirements of ceruleans and elk is an achievable goal.

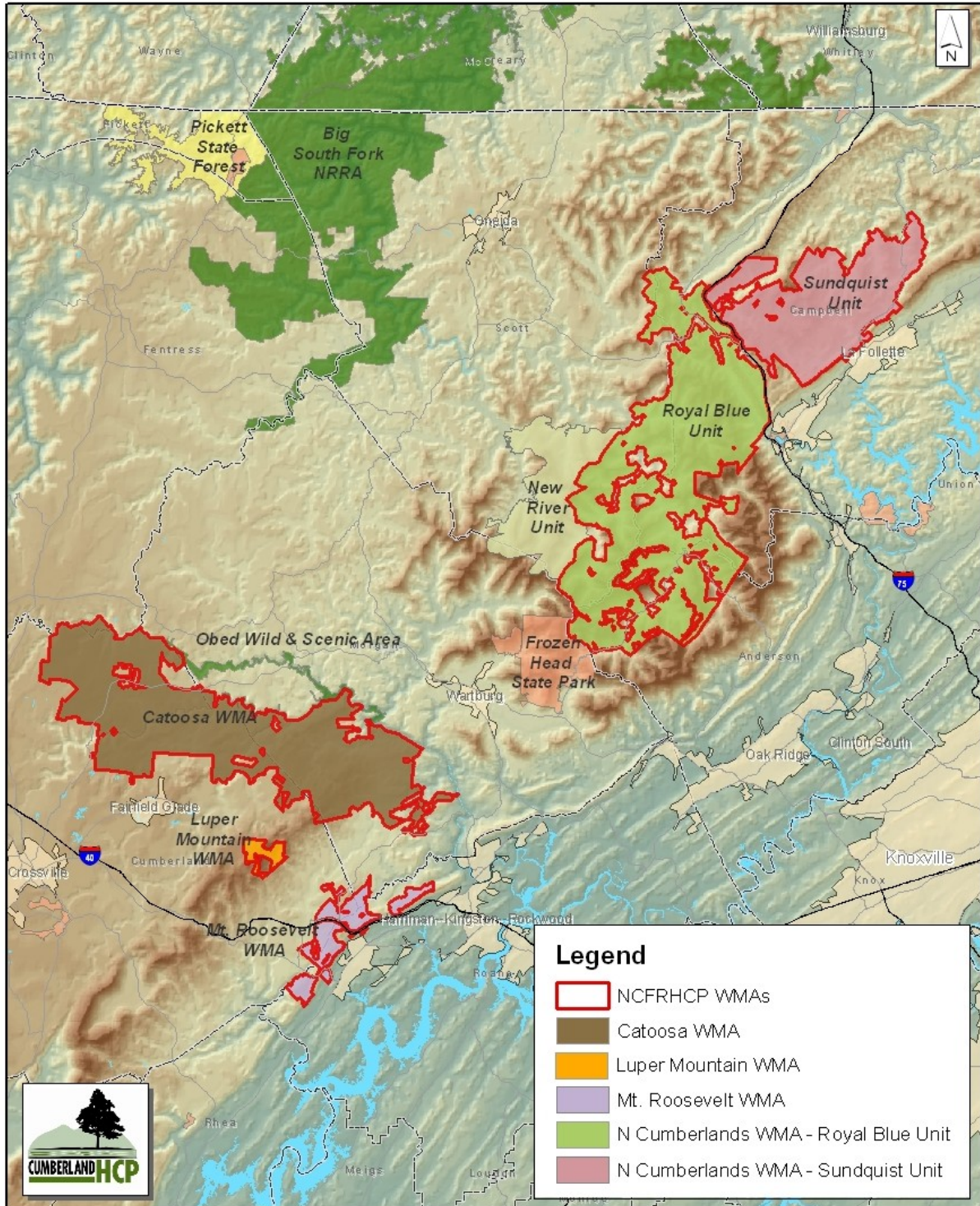
warblers in selected areas; and stimulate desired herbaceous and woody cover in early successional management areas.





Forest Resources HCP Project Area

W W W . C U M B E R L A N D H C P . O R G



2010