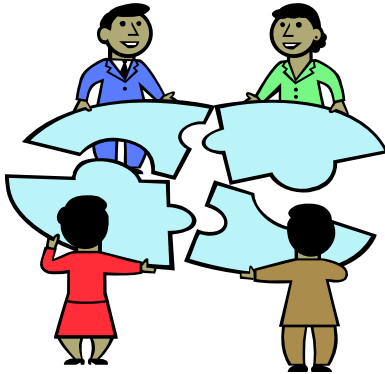


# Wastewater Treatment

- STP below Holiday Hills Lake
- Sewage part of development
  - Often ‘guides’ development
- Existing expansion capacity
  - Conservation measure!
  - Minimal ‘take’
- Monitoring and Adaptive Management plan



# HCP Progress



- Covered Species
- Covered Activities
- BGOs/KLFs
- Conservation Measures
- Monitoring
  - Compliance Monitoring
  - Effects and Effectiveness Monitoring
- Adaptive Management
- Implementation
- Changed and Unforeseen Circumstances
- Cumulative Impacts
- Take Estimate
- Funding
- Document Preparation / Writing

